

Madison, Wisconsin

# CITY OF MADISON

## CITY ENGINEERING DIVISION

### DEPARTMENT OF PUBLIC WORKS

# PLAN OF PROPOSED IMPROVEMENT

PUBLIC IMPROVEMENT PROJECT APPROVED

MARCH 19, 2024

BY THE COMMON COUNCIL OF MADISON, WISCONSIN

PUBLIC IMPROVEMENT DESIGN APPROVED BY:

Jun 13, 2024

City Engineer

Date

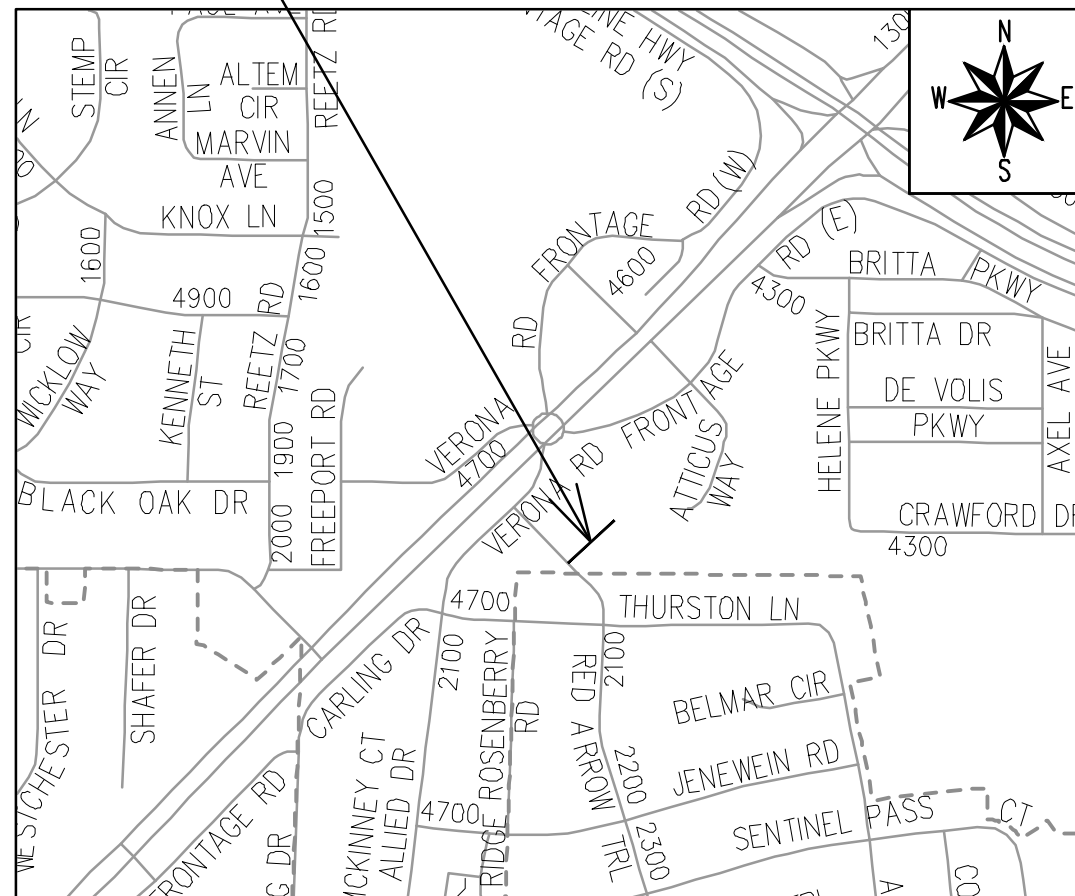
INDEX OF SHEETS

SHEET NO. D1	TYPICAL SECTION
SHEET NO. D2	TERRACE EXCAVATION & BACKFILL DETAIL
SHEET NO. O1	OVERVIEW PLAN
SHEET NO. EC1	EROSION CONTROL PLAN
SHEET NO. P1-P3	STREET PLAN & PROFILES
SHEET NO. U1	UTILITY PLAN & PROFILES
SHEET NO. USTM	STORM SEWER SCHEDULE
SHEET NO. E1	ELECTRICAL PLAN
SHEET NO. PM1	MARKING PLAN
SHEET NO. L1	LANDSCAPING PLAN
SHEET NO. X1-X3	CROSS SECTIONS
SHEET NO. MN1	MAINTENANCE PLAN (CITY USE ONLY)

## ATTICUS WAY ASSESSMENT DISTRICT - 2024

### PROJECT LOCATION

CITY PROJECT NO. 14763  
CONTRACT NO. 8744



EARTHWORK SUMMARY:

EXCAVATION CUT (MEASURED PLAN QUANTITY)	400 CY
ESTIMATED UNDISTRIBUTED UNDERCUT	100 CY
TOTAL UNCLASSIFIED EXCAVATION CUT	500 CY

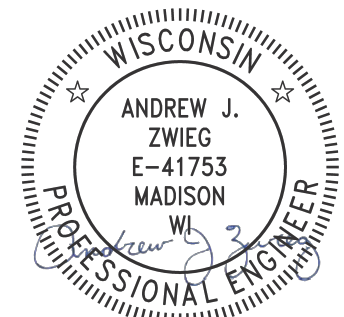
CONVENTIONAL SIGNS  
FIELD VERIFY ALL UTILITY LOCATIONS

GAS	G
STORM SEWER	ST
SANITARY SEWER	SN
WATER	W
BURIED ELECTRIC	E
OVERHEAD ELECTRIC	OH
POWER POLE	[Symbol]
ADA COMPLIANT RAMP W/ DETECTABLE WARNING FIELD	[Symbol]
COMBUSTIBLE FLUIDS	[Symbol]

NOTES:  
ALL GUTTERS SHALL DRAIN WITH A MINIMUM GRADE OF 0.50% TOWARD STORM SEWER INLETS.

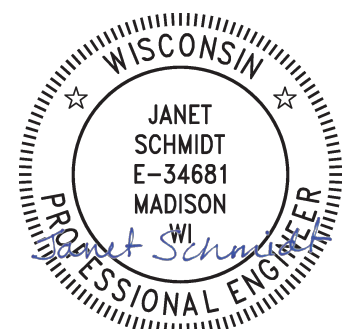
SIDEWALK RAMPS SHALL HAVE A MAXIMUM SLOPE OF 1" PER 12". SIDEWALK AND CURB RAMPS SHALL BE CONSTRUCTED WITH A SIDE SLOPE OF 2.00%. SIDEWALK SHALL HAVE A MINIMUM LONGITUDINAL SLOPE OF 0.50% AND A MAXIMUM LONGITUDINAL SLOPE OF 5.00% EXCEPT WHERE STREET GRADES EXCEED 5.00%.

STREET DESIGNED BY:



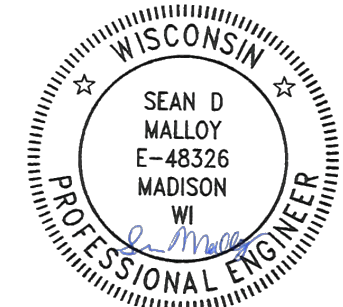
Jun 13, 2024

STORM SEWER DESIGNED BY:



Jun 13, 2024

GEOMETRY AND PAVEMENT MARKINGS DESIGNED BY:



Jun 13, 2024

ELECTRICAL DESIGNED BY:

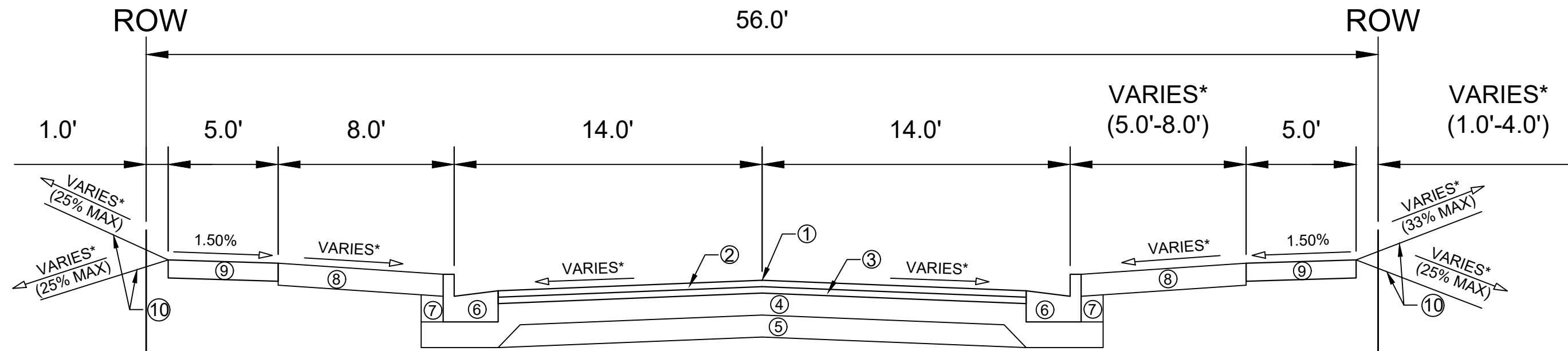


Jun 13, 2024

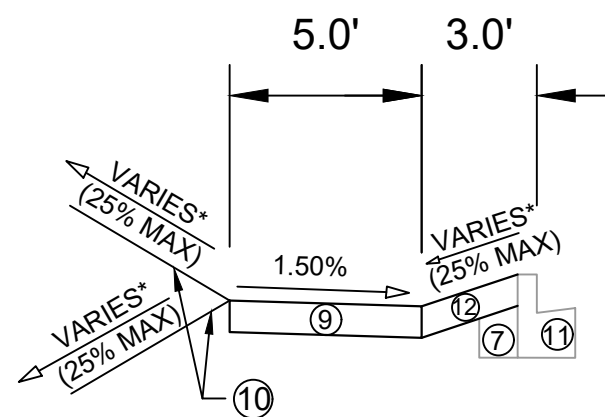
PLOT SCALE: 1" = 100'

REV. DATE: 6/13/2024 8:58 AM

ORIGINATOR: CITY OF MADISON



TYPICAL SECTION  
ROLLING WAY  
STA 107+35 TO STA 109+46



TYPICAL SECTION  
VERONA FRONTAGE ROAD  
SIDEWALK CONNECTION

SPECIAL NOTES:

- TYPICAL SECTIONS NOT TO SCALE.
- \* SEE P AND X SHEETS FOR CROSS SLOPES, AND EDGE OF PAVEMENT ELEVATIONS.

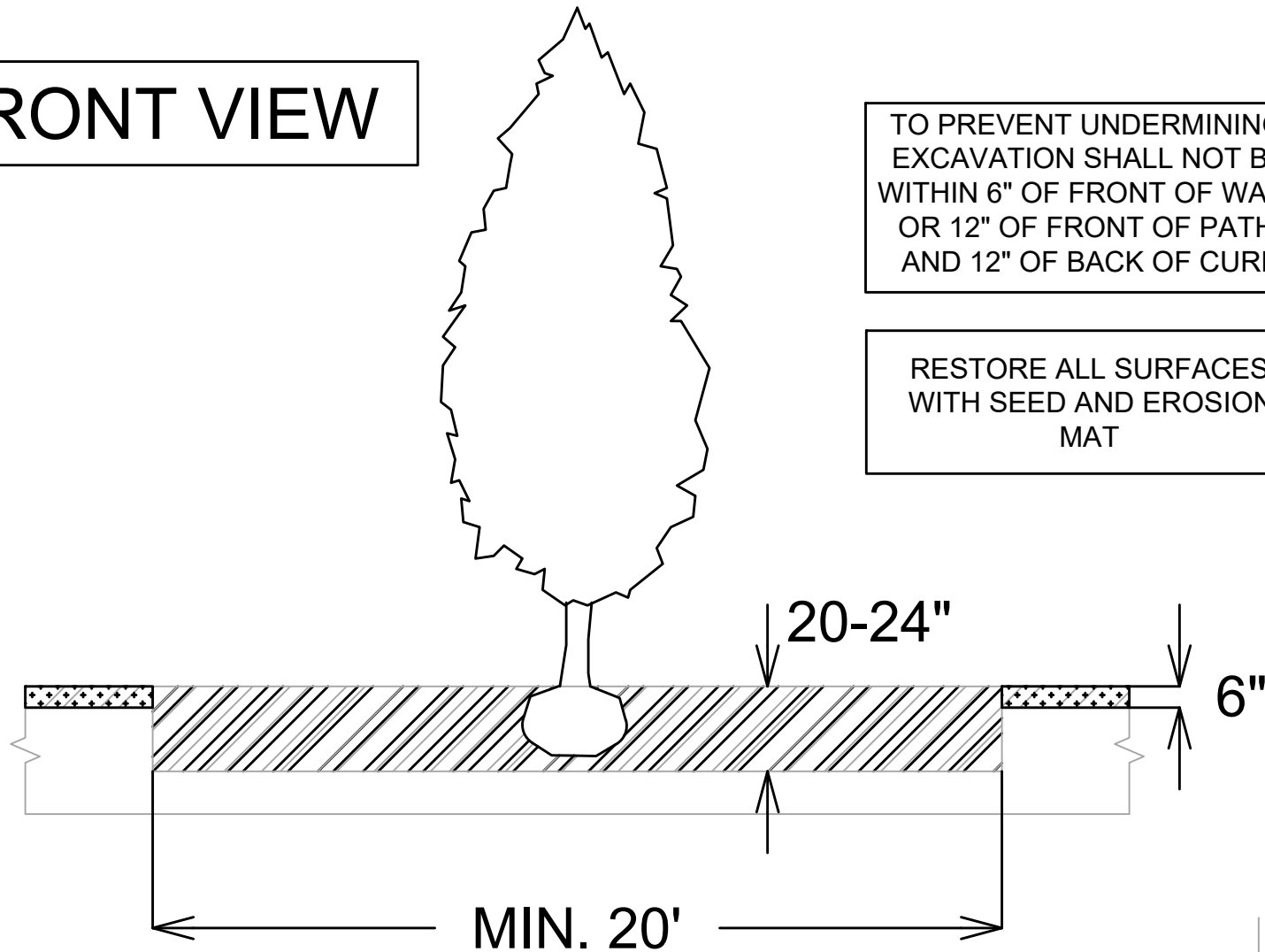
- ① POINT REFERRED TO ON PROFILE
- ② 1.75" H.M.A. PAVEMENT- TYPE 4 LT 58-28 S (UPPER LAYER)
- ③ 1.75" H.M.A. PAVEMENT- TYPE 4 LT 58-28 S (LOWER LAYER)
- ④ 6" CRUSHED AGGREGATE BASE COURSE GRADATION 2
- ⑤ 6" CRUSHED AGGREGATE BASE COURSE GRADATION 1
- ⑥ CONCRETE CURB AND GUTTER TYPE 'A'.
- ⑦ FILL
- ⑧ 6" TOPSOIL, SEED AND MATTING
- ⑨ 5" CONCRETE SIDEWALK
- ⑩ RESTORE DISTURBED AREAS W/ 6" TOPSOIL, SEED & MATTING
- ⑪ EXISTING CURB AND GUTTER TYPE 'G' TO REMAIN.
- ⑫ 5" CONCRETE TERRACE

14763	MADISON, WI	8744	CONTRACT NO:	D-1
ATTICUS WAY ASSESSMENT DISTRICT - 2024				
M:\DESIGN\Projects\14763\CAD\Streets\14763EN-Details.dwg				
14763				
D-1				

**TERRACE EXCAVATION FOR TREE PLANTING:**

THIS INCLUDES ALL WORK NECESSARY TO EXCAVATE AREAS WITHIN GRASS TERRACES TO AN APPROPRIATE DEPTH SUITABLE FOR NEW TREE PLANTINGS. ALL WORK SHALL BE IN ACCORDANCE WITH ARTICLE 201 OF THE STANDARD SPECIFICATIONS. THE PROPOSED LOCATIONS FOR TREE PLANTINGS ARE IDENTIFIED ON THE LANDSCAPING PLAN INCLUDED WITHIN THIS PLAN SET. PRIOR TO THE CONTRACTOR STARTING THE EXCAVATION WORK, THE ENGINEER AND FORESTRY REPRESENTATIVE SHALL REVIEW THE PLAN LOCATIONS ON-SITE AND CONFIRM THAT NO CONFLICTS ARE ANTICIPATED. ONCE THE LOCATIONS MARKED, THE CONTRACTOR SHALL EXCAVATE THE TERRACE AREA TO A SUITABLE DEPTH FOR NEW TREE PLANTINGS, APPROXIMATELY TWENTY (20) INCHES TO TWENTY-FOUR (24) INCHES. THE TERRACE SHALL BE EXCAVATED TO A MINIMUM LENGTH OF TWENTY (20) FEET, BUT THAT MAY BE REDUCED BY THE CONSTRUCTION ENGINEER TO FIT SITE CONSTRAINTS AS NECESSARY. THE WIDTH OF THE TERRACE SHALL ALSO BE EXCAVATED TO AS CLOSE TO THE SIDEWALK/PATH AND CURB AS IS REASONABLE. WHILE PERFORMING THE EXCAVATION, THE CONTRACTOR SHALL TAKE CARE TO NOT UNDERMINE OR DAMAGE THE ADJACENT CURB OR SIDEWALK. IF DAMAGED DURING THE EXCAVATION PROCESS, THE DEVELOPER SHALL REPLACE CURB OR SIDEWALK/PATH AT THEIR COST. ONCE THE AREA IS EXCAVATED, THE CONTRACTOR SHALL BACKFILL THE EXCAVATED AREA WITH REGULAR TOPSOIL, AND THE SURFACE SHALL BE RESTORED WITH SEED AND EROSION MAT.

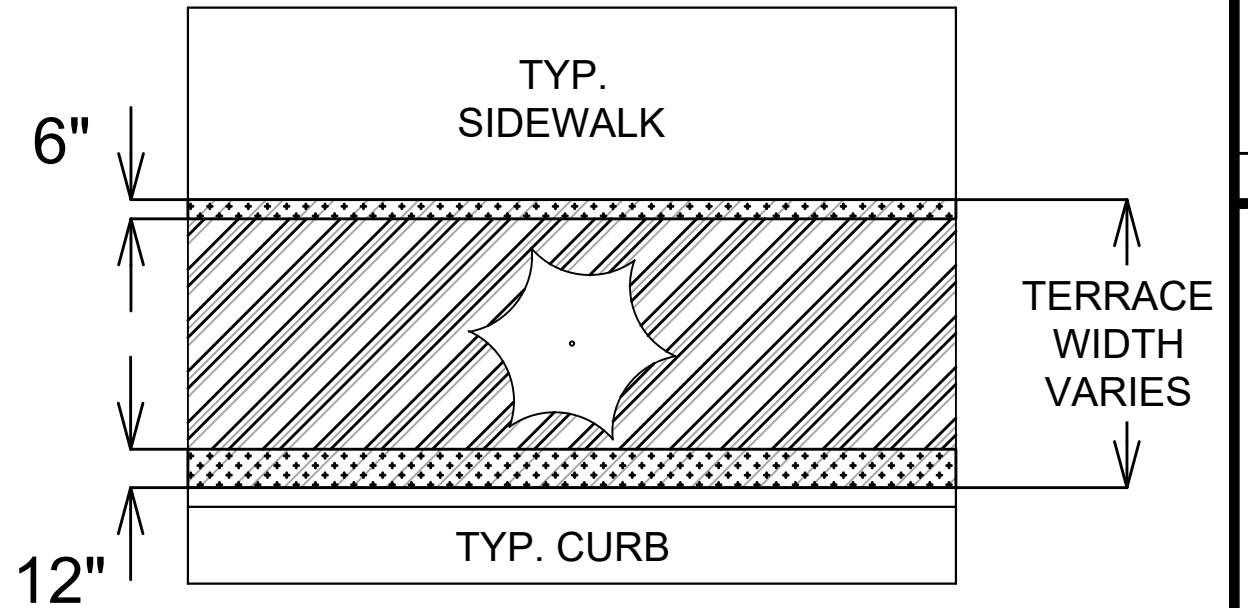
**FRONT VIEW**



TO PREVENT UNDERMINING, EXCAVATION SHALL NOT BE WITHIN 6" OF FRONT OF WALK OR 12" OF FRONT OF PATH, AND 12" OF BACK OF CURB

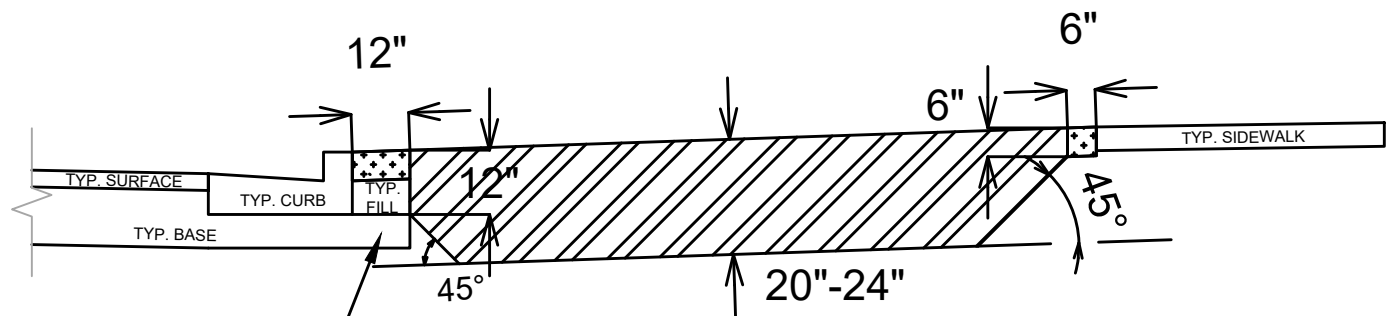
RESTORE ALL SURFACES WITH SEED AND EROSION MAT

**TOP VIEW**



**LEGEND**

- AREA TO BE EXCAVATED 20-24" DEEP AND BACKFILLED WITH TOPSOIL
- AREA TO BE 6" TOPSOIL



**SECTION VIEW**

12" BASE EXTENSION BEHIND CURB

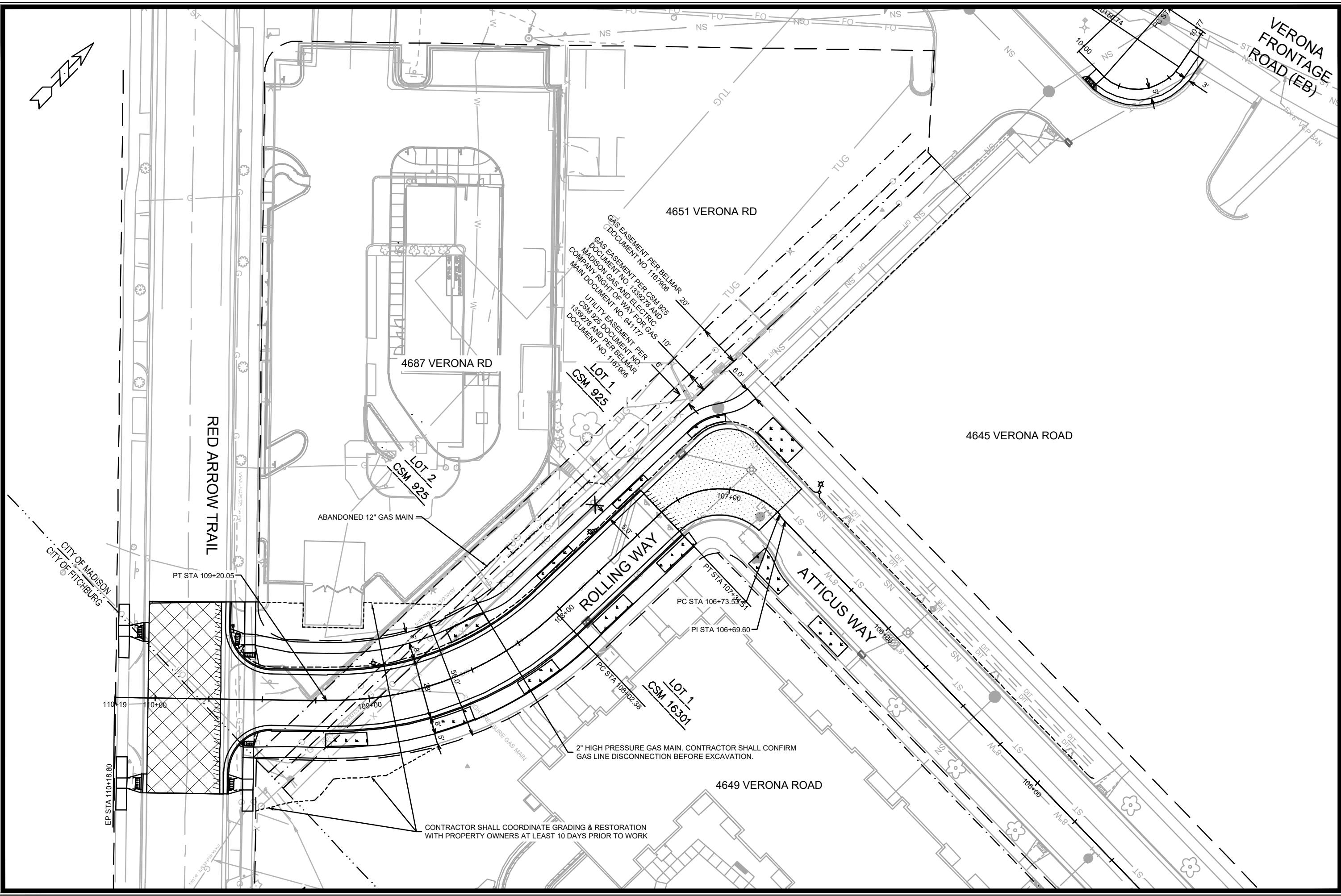
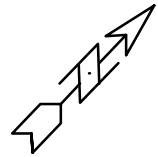
**SPECIAL NOTES:**

REFER TO S.D.D. 2.01 FOR STANDARD PLANTING TECHNIQUE FOR TREES IN TURF AREAS.

MARK	REVISION	DATE	BY
14763		09/29/2024 12:05 PM	
Designed By: ID	Scale:		D-2

14763  
MADISON, WI  
CONTRACT NO.: 8744  
TERRACE EXCAVATION & BACKFILL DETAIL  
ATTICUS WAY ASSESSMENT DISTRICT - 2024  
M:\DESIGN\Projects\14763\CAD\Streets\14763EN-Details.dwg





GAS EASEMENT PER BELMAR DOCUMENT NO. 1167906  
 GAS EASEMENT PER CSM 925 DOCUMENT NO. 139228 AND MADISON GAS AND ELECTRIC COMPANY RIGHT OF WAY FOR GAS CSM 925 DOCUMENT NO. 941177  
 UTILITY EASEMENT PER CSM 925 DOCUMENT NO. 139228 AND PER BELMAR DOCUMENT NO. 1167906

LOT 1  
 CSM 925

4687 VERONA RD

4651 VERONA RD

4645 VERONA ROAD

ABANDONED 12" GAS MAIN

ROLLING WAY

ATTICUS WAY

LOT 1  
 CSM 16301

2" HIGH PRESSURE GAS MAIN. CONTRACTOR SHALL CONFIRM GAS LINE DISCONNECTION BEFORE EXCAVATION.

4649 VERONA ROAD

CONTRACTOR SHALL COORDINATE GRADING & RESTORATION WITH PROPERTY OWNERS AT LEAST 10 DAYS PRIOR TO WORK

PT STA 109+20.05

PC STA 106+73.53 ST

PI STA 106+69.60

PC STA 108+02.35

110+19

10+00

109+00

108+00

107+00

106+00


105+00

EP STA 110+18.80

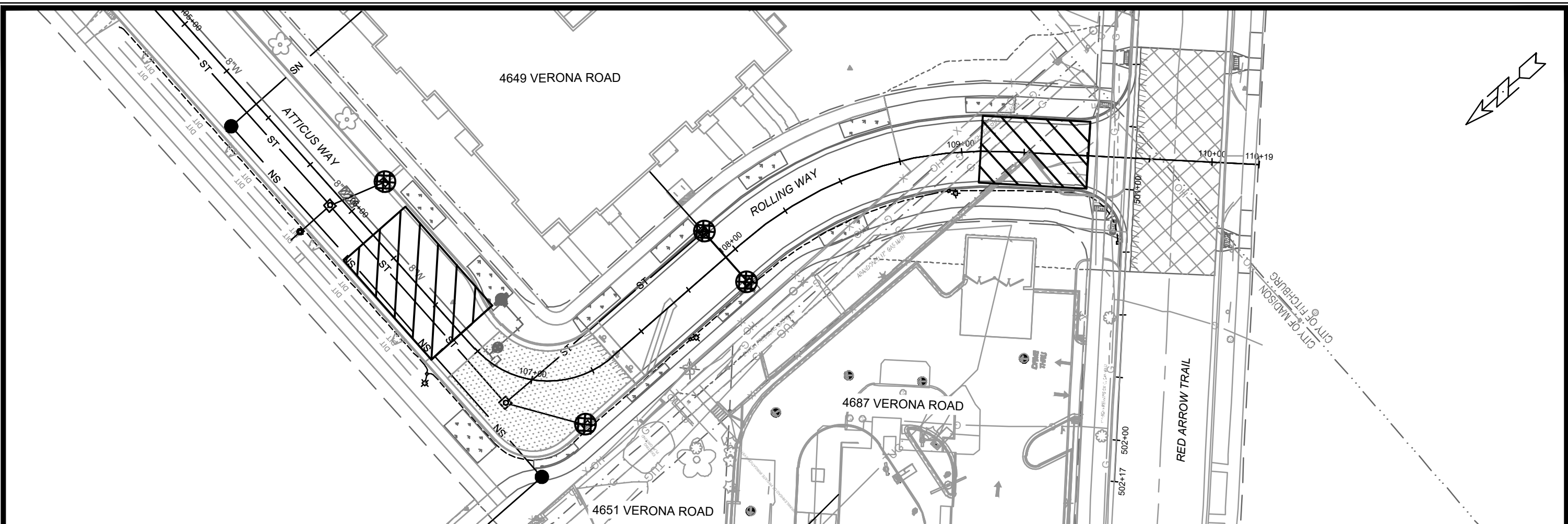
MARK	REVISION	DATE	BY
14763		01/22/2024	6:04 AM
Designated By: LO			
Scale:			O-1

14763  
 MADISON, WI  
 CONTRACT NO: 8744

OVERVIEW PLAN  
 ATTICUS WAY ASSESSMENT DISTRICT - 2024  
 M:\DESIGN\Projects\14763\CAD\Streets\14763EN-Street\Network\_Overview.dwg



14763  
 O-1



EXISTING SANITARY SEWER AND STORM SEWER ON ATTICUS WAY AND ROLLING WAY WERE INSTALLED DURING THE '4649 VERONA ROAD' PRIVATE DEVELOPMENT PROJECT (SUMMIT RIDGE APARTMENTS) - SEE CITY PROJECT 14774, CONTRACT 9231 FOR ADDITIONAL INFORMATION.

**EROSION CONTROL NOTES:**

EROSION CONTROL MEASURES SHALL BE IN PLACE PRIOR TO ANY OTHER CONSTRUCTION ACTIVITY.

THE CONTRACTOR IS RESPONSIBLE FOR THE CONSTRUCTION AND MAINTENANCE OF ALL EROSION CONTROL MEASURES UNTIL FINAL ACCEPTANCE BY THE CITY OF MADISON.

THE CONTRACTOR SHALL INSTALL AND MAINTAIN EROSION CONTROL MEASURES IN ACCORDANCE WITH THE WDNR SOC STANDARDS AND CITY OF MADISON STANDARD SPECIFICATIONS.

THE CONTRACTOR SHALL PROVIDE STREET CLEANING AS NEEDED ON A DAILY BASIS TO KEEP TRACKING TO A MINIMUM.

INLET PROTECTION SHALL BE INSTALLED WITHIN THE CONSTRUCTION LIMITS. RIGID FRAME INLET PROTECTION SHALL ALSO BE INSTALLED NEAR THE DRIVEWAY TO 4649 VERONA ROAD (SUMMIT RIDGE APARTMENTS - TWO INLETS TOTAL). ADDITIONAL INLET PROTECTION SHALL BE PLACED AS DIRECTED.

POLYMER SHALL BE APPLIED TO DISTURBED AREAS AS DIRECTED BY THE CONSTRUCTION ENGINEER.

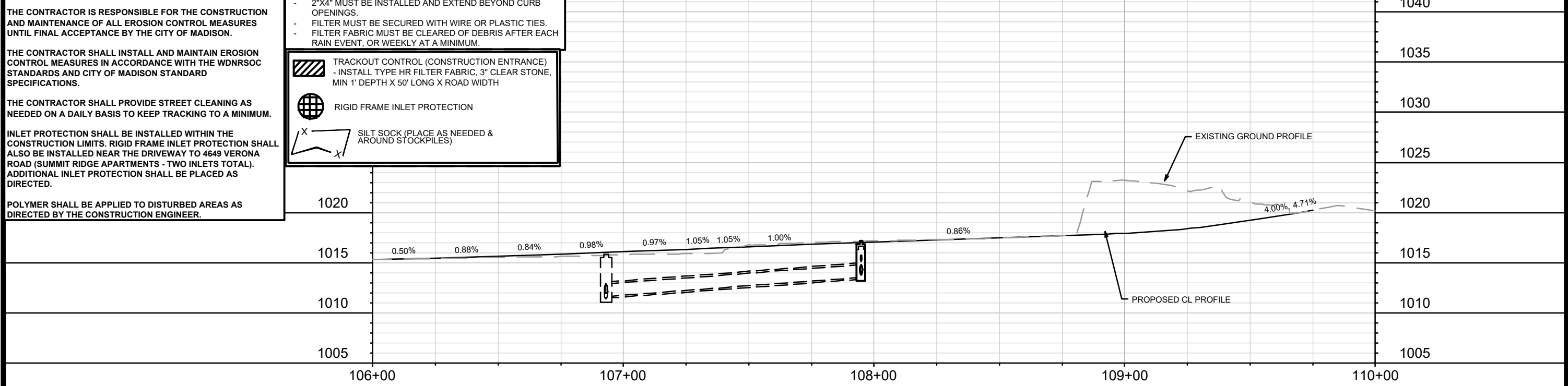
TYPE C INLET PROTECTION MAY ONLY BE INSTALLED IF RIGID FRAME INLET PROTECTION WILL NOT FIT STRUCTURE.

- FABRIC FLAPS MUST BE CUT TO LEAVE LESS THAN 6" AROUND GRATE.
- 2"x4" MUST BE INSTALLED AND EXTEND BEYOND CURB OPENINGS.
- FILTER MUST BE SECURED WITH WIRE OR PLASTIC TIES.
- FILTER FABRIC MUST BE CLEARED OF DEBRIS AFTER EACH RAIN EVENT, OR WEEKLY AT A MINIMUM.

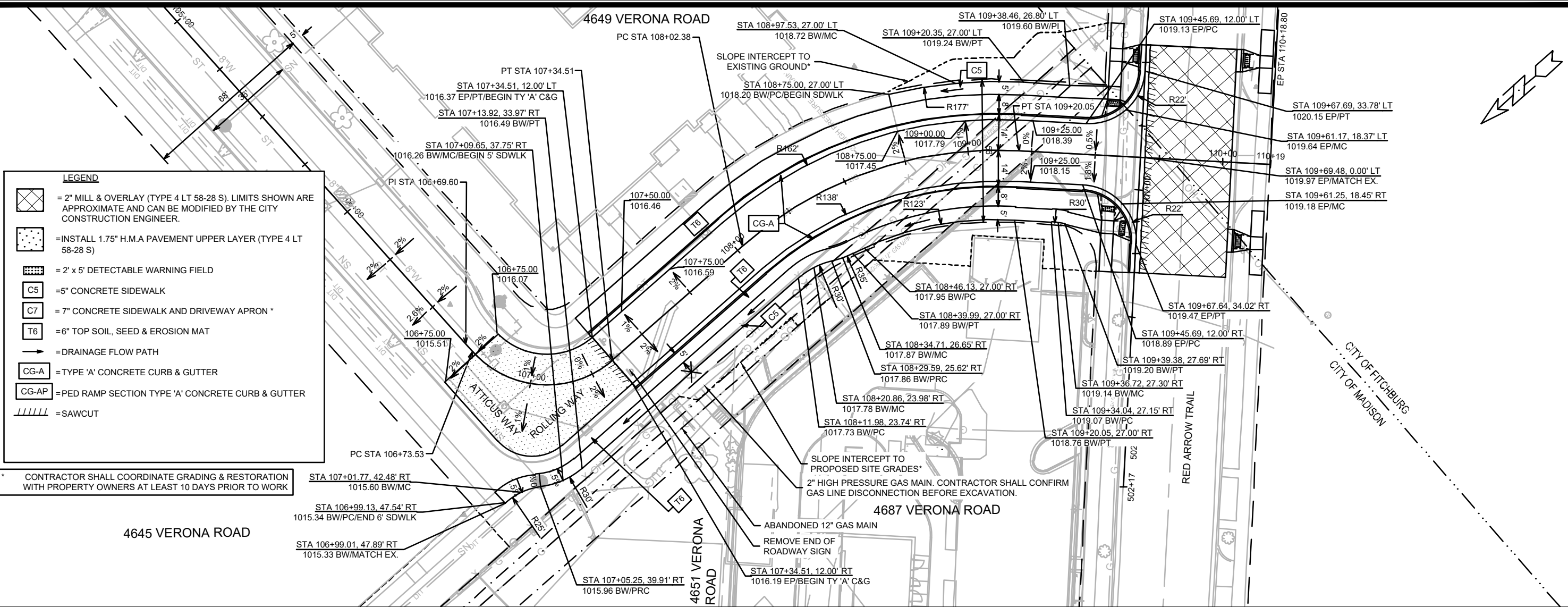
- TRACKOUT CONTROL (CONSTRUCTION ENTRANCE)  
- INSTALL TYPE HR FILTER FABRIC, 3" CLEAR STONE, MIN 1' DEPTH X 50' LONG X ROAD WIDTH
- RIGID FRAME INLET PROTECTION
- SILT SOCK (PLACE AS NEEDED & AROUND STOCKPILES)

**STREETS LEGEND**

- = 2" MILL & OVERLAY (TYPE 4 LT 58-28 S). LIMITS SHOWN ARE APPROXIMATE AND CAN BE MODIFIED BY THE CITY CONSTRUCTION ENGINEER.
- = 2' x 5' DETECTABLE WARNING FIELD
- = SAWCUT



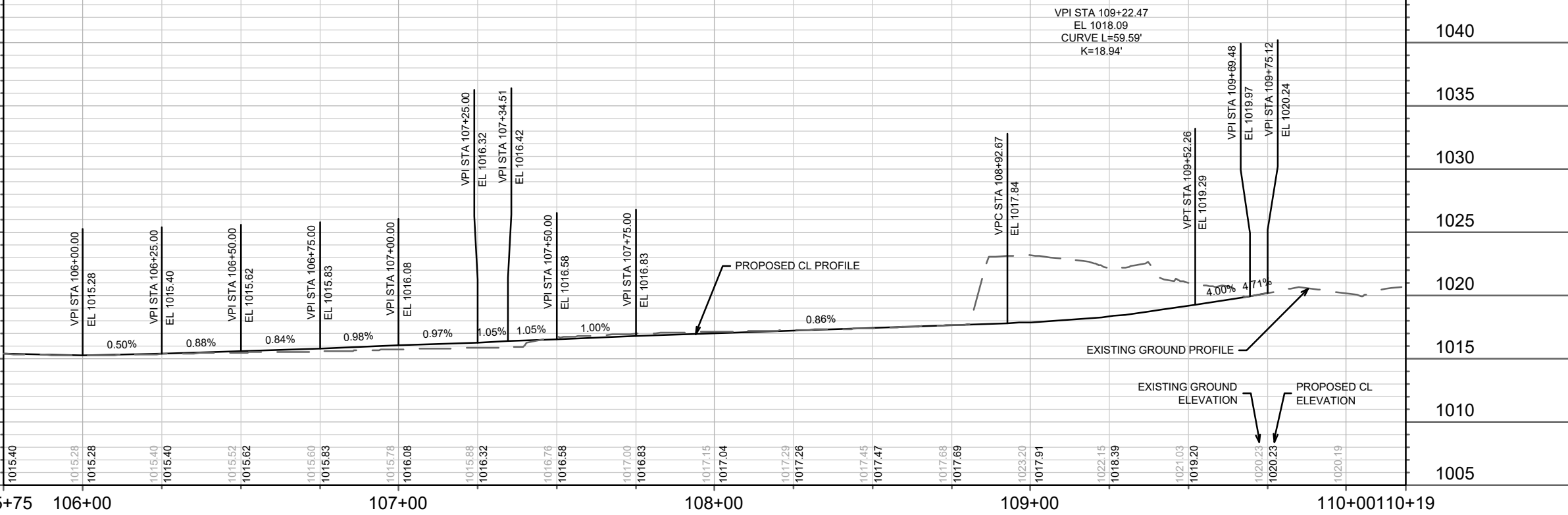
MARK	REVISION	DATE	BY
14763		06/11/2024 3:56 PM	EC-1
14763		MADISON, WI	
EROSION CONTROL PLAN - ATTICUS WAY & ROLLING WAY		CONTRACT NO: 8744	
ATTICUS WAY ASSESSMENT DISTRICT - 2024		M:\DESIGN\Projects\14763\CAD\Sewers\14763SWR-ErosionControl.dwg	
14763		EC-1	



**LEGEND**

- = 2" MILL & OVERLAY (TYPE 4 LT 58-28 S). LIMITS SHOWN ARE APPROXIMATE AND CAN BE MODIFIED BY THE CITY CONSTRUCTION ENGINEER.
- = INSTALL 1.75" H.M.A PAVEMENT UPPER LAYER (TYPE 4 LT 58-28 S)
- = 2' x 5' DETECTABLE WARNING FIELD
- = 5' CONCRETE SIDEWALK
- = 7' CONCRETE SIDEWALK AND DRIVEWAY APRON \*
- = 6" TOP SOIL, SEED & EROSION MAT
- = DRAINAGE FLOW PATH
- = TYPE 'A' CONCRETE CURB & GUTTER
- = PED RAMP SECTION TYPE 'A' CONCRETE CURB & GUTTER
- = SAWCUT

\* CONTRACTOR SHALL COORDINATE GRADING & RESTORATION WITH PROPERTY OWNERS AT LEAST 10 DAYS PRIOR TO WORK

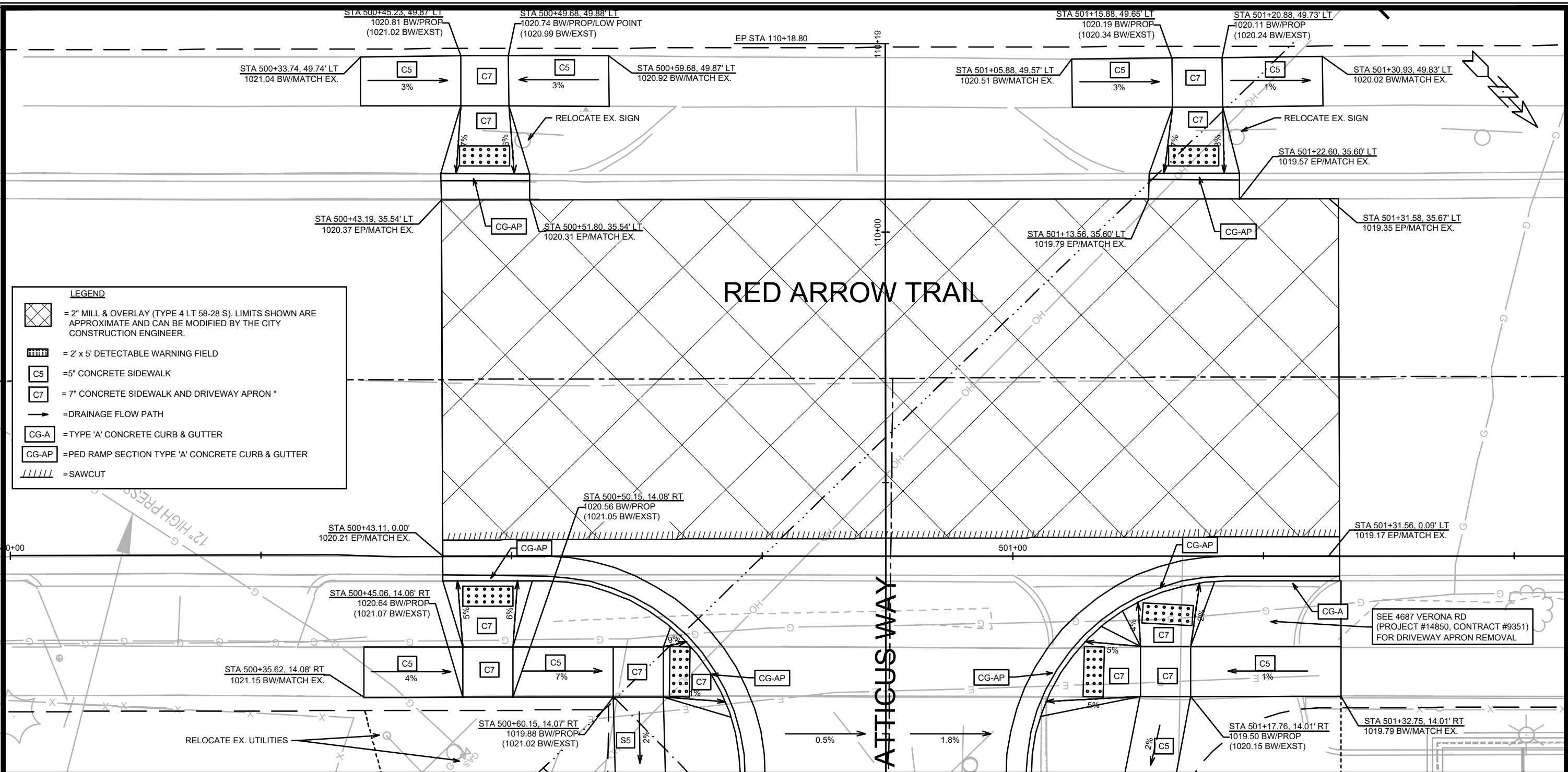


MARK	REVISION	DATE	BY
14763		01/22/2024 6:05 AM	P-1

14763  
 MADISON, WI  
 CONTRACT NO: 8744

STREET PLAN & PROFILE - ATTICUS WAY & ROLLING WAY  
 ATTICUS WAY ASSESSMENT DISTRICT - 2024  
 M:\DESIGN\Projects\14763\CAD\Streets\14763EN-PnP.dwg

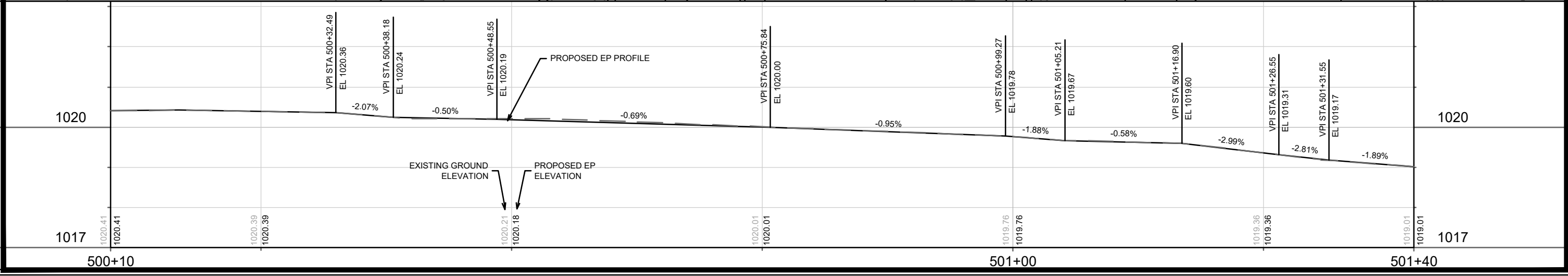
14763  
 P-1




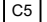

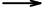
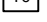
DATE	BY
REVISION	
DATE	BY
DESIGNED BY	14763
DATE	8/15/24
SCALE	1:10
PAGE	P-2

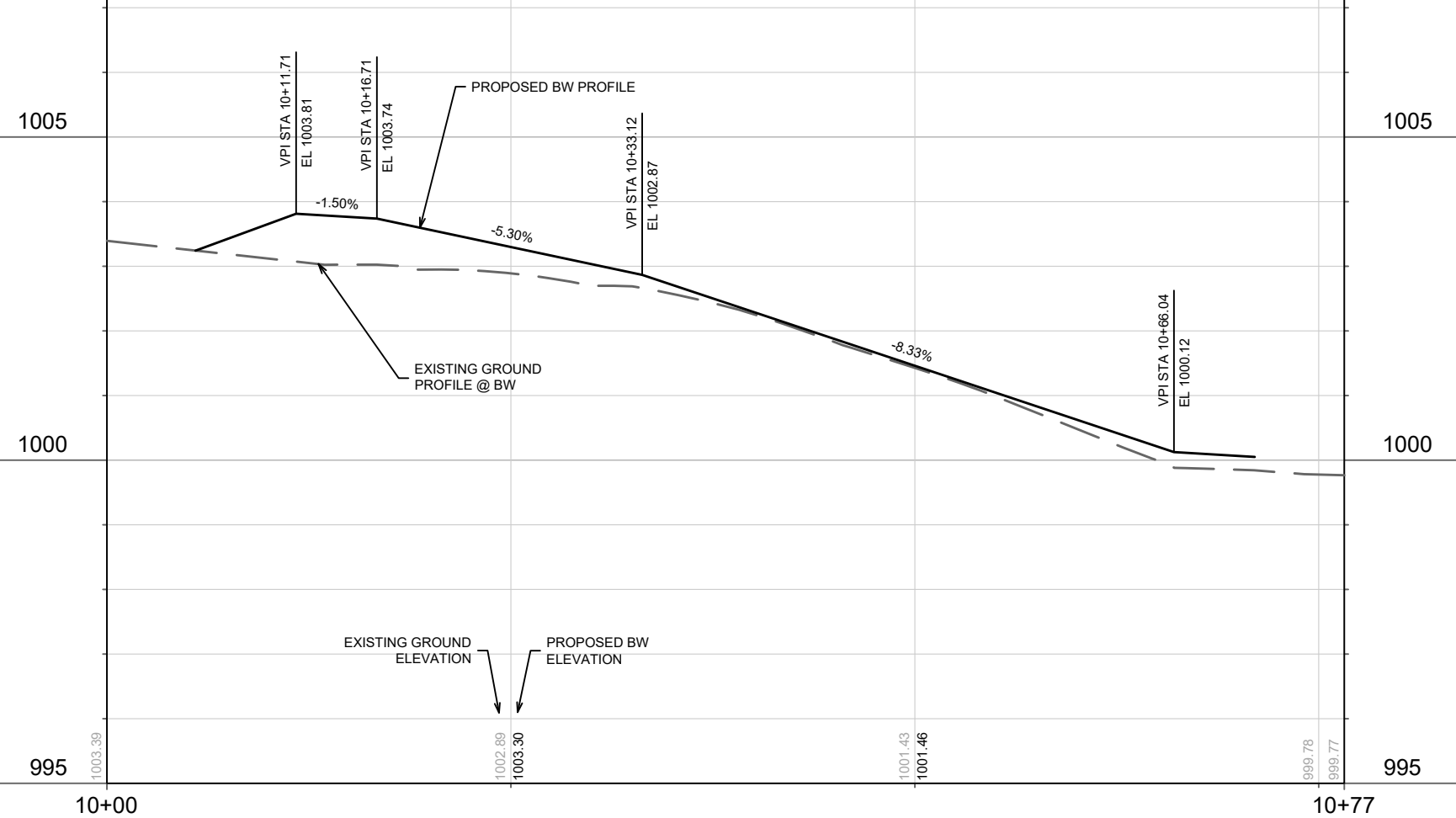
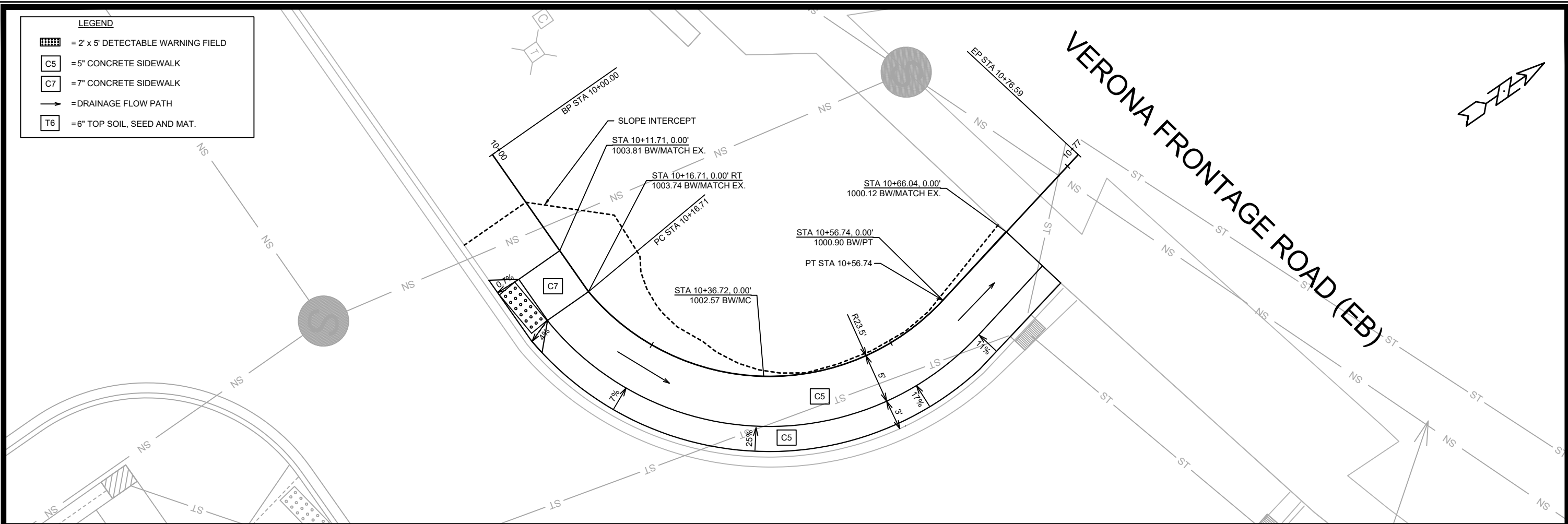
14763  
MADISON, WI  
CONTRACT NO.: 8744

STREET PLAN & PROFILE - RED ARROW TRAIL  
ATTICUS WAY ASSESSMENT DISTRICT - 2024  
M:\DESIGN\Projects\14763\CAD\Streets\14763EN-PnP.dwg



**LEGEND**

-  = 2' x 5' DETECTABLE WARNING FIELD
-  = 5" CONCRETE SIDEWALK
-  = 7" CONCRETE SIDEWALK
-  = DRAINAGE FLOW PATH
-  = 6" TOP SOIL, SEED AND MAT.



MARK	REVISION	DATE	BY

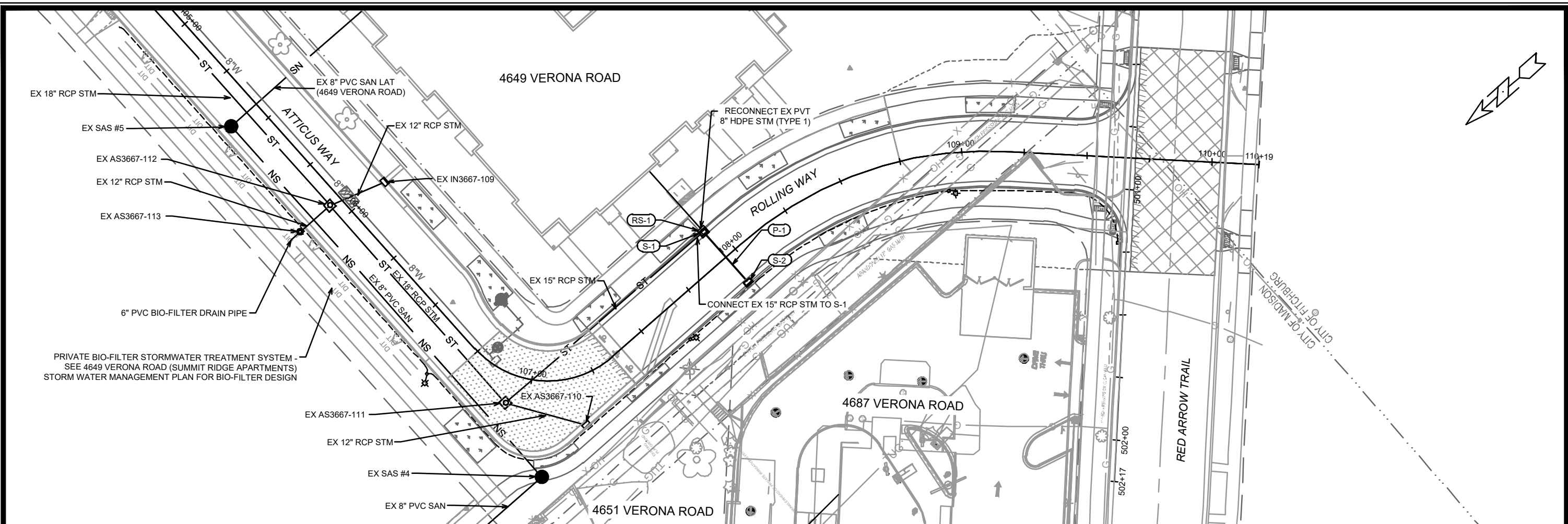
14763  
 MADISON, WI  
 CONTRACT NO: 8744

STREET PLAN & PROFILE - VERONA FRONTAGE ROAD  
 ATTICUS WAY ASSESSMENT DISTRICT - 2024  
 M:\DESIGN\Projects\14763\CAD\Streets\14763EN-PrP.dwg



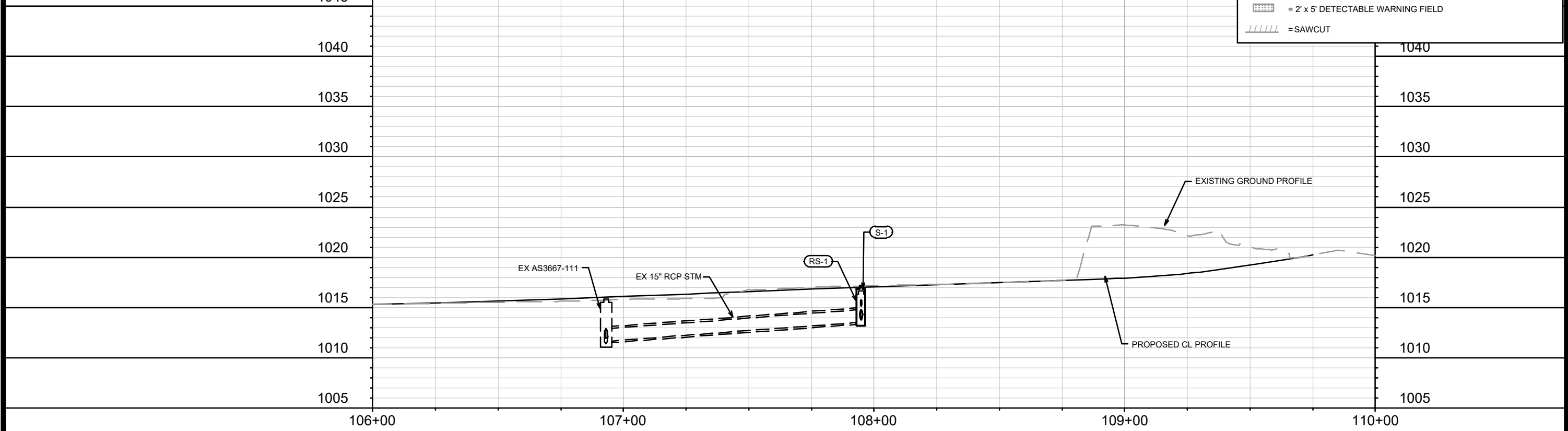
14763  
 P-3





EXISTING SANITARY SEWER AND STORM SEWER ON ATTICUS WAY AND ROLLING WAY WERE INSTALLED DURING THE '4649 VERONA ROAD' PRIVATE DEVELOPMENT PROJECT (SUMMIT RIDGE APARTMENTS) - SEE CITY PROJECT 14774, CONTRACT 9231 FOR ADDITIONAL INFORMATION.


STREETS LEGEND	
2" MILL & OVERLAY (TYPE 4 LT 58-28 S). LIMITS SHOWN ARE APPROXIMATE AND CAN BE MODIFIED BY THE CITY CONSTRUCTION ENGINEER.	
2' x 5' DETECTABLE WARNING FIELD	
SAWCUT	



MARK	REVISION	DATE	BY
14763		06/11/2024 4:00 PM	U-1

14763  
 MADISON, WI  
 CONTRACT NO: 8744

SEWER PLAN & PROFILE - ATTICUS WAY & ROLLING WAY  
 ATTICUS WAY ASSESSMENT DISTRICT - 2024  
 M:\DESIGN\Projects\14763\CAD\Sewers\14763SWR-PipeNetwork.dwg



14763  
 U-1

# SEWER SCHEDULE

ATTICUS WAY ASSESSMENT DISTRICT - 2024	SHEET NO.
PROJECT NO. 14763	U-2
SEWER SCHEDULE	
CITY OF MADISON	

## PROPOSED STORM STRUCTURES

STRUC. NO.	STATION	LOCATION (OFFSET)	TYPE	TOP OF CASTING	E.I.	DEPTH	NOTES
<b>ATTICUS WAY &amp; ROLLING WAY</b>							
S-1	107+94.80	LT-13.50	H-INLET	1017.14	1013.53	3.61	[1]; [2]; W/R-3067-7004-V
S-2	107+94.94	RT-13.50	H-INLET	1017.14	1014.05	3.09	W/R-3067-7004-V

## PROPOSED STORM PIPES

PIPE NO.	FROM (DNSTM)	TO (UPSTM)	DISCH. E.I.	INLET E.I.	PLAN (PAY) LGTH (FT)	PIPE LGTH (FT)	SLOPE (%)	PIPE SIZE	TYPE	NOTES
<b>ATTICUS WAY &amp; ROLLING WAY</b>										
P-1	S-1	S-2	1013.78	1014.05	27	25	1.08%	12	RCP	

## STORM STRUCTURE REMOVALS & ABANDONMENTS

STRUC. NO.	ID NO.	STATION	LOCATION (OFFSET)	TYPE	DEPTH (FT)	NOTES
<b>ATTICUS WAY &amp; ROLLING WAY</b>						
RS-1	AS3667-108	107+94.80	LT-13.50	3X3 SAS	3.86	

## SPECIFIC NOTES

- [1] RECONNECT EX 8" HDPE PVT STM CONNECT FROM 4649 VERONA RD APARTMENT BUILDING (TYPE I RECONNECT)  
 [2] RECONNECT EX 15" RCP STM = EI(N) = 1013.53

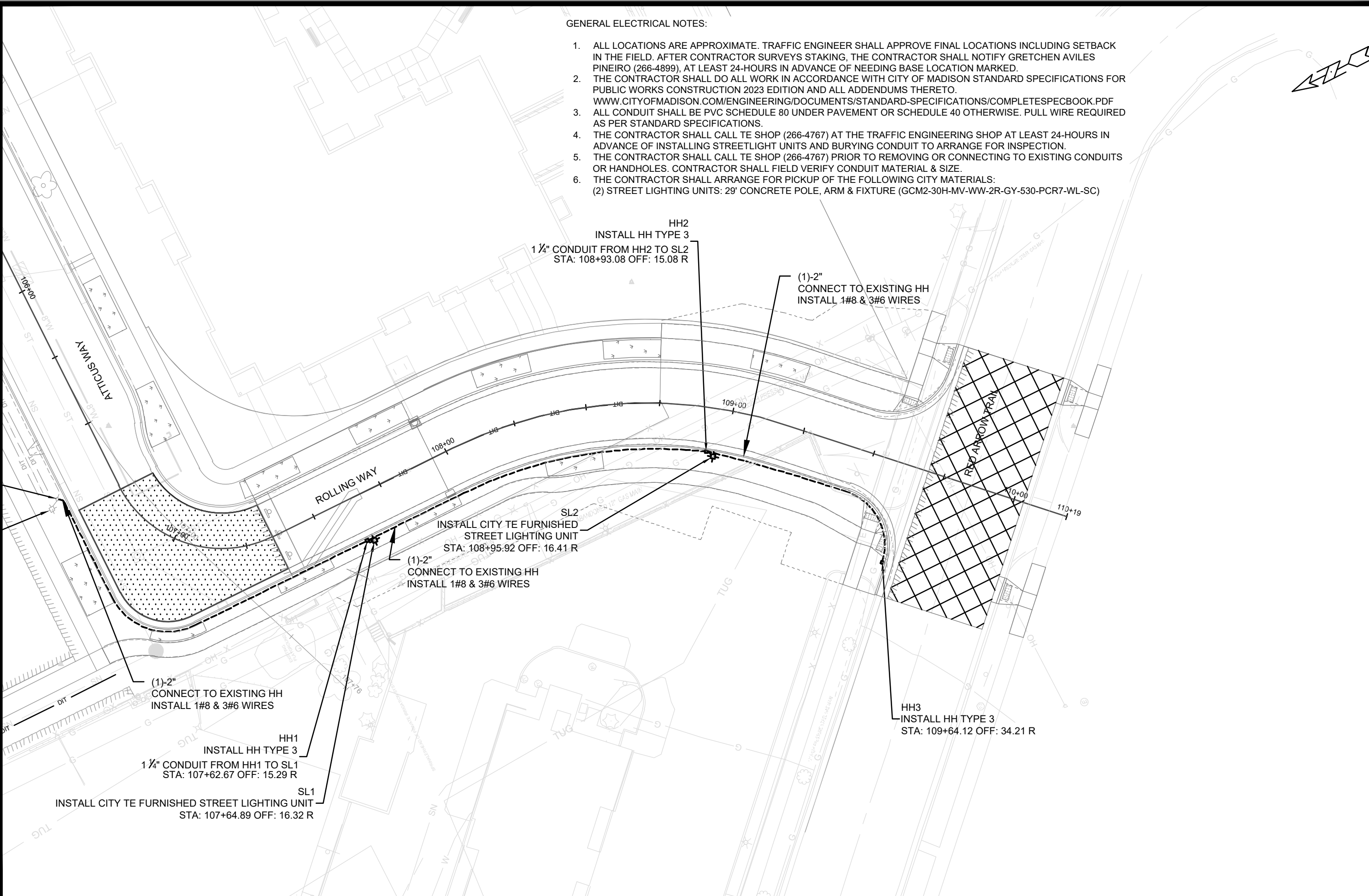
**NOTE:** PLAN LENGTH (PAY LENGTH) IS FROM CENTER OF STRUCTURE TO CENTER OF STRUCTURE. PIPE LENGTH IS ACTUAL LENGTH OF PIPE FROM STRUCTURE WALL TO STRUCTURE WALL. SLOPE CALCULATED USING PIPE LENGTH.

## STANDARD NOTES:

- ABBREVIATIONS: AE = APRON ENDWALL; RCP = REINFORCED CONCRETE PIPE; HERCP = HORIZONTAL ELLIPTICAL REINFORCED CONCRETE PIPE; DNA = DOES NOT APPLY; SAS = SEWER ACCESS STRUCTURE; LP = LOW POINT INLET STRUCTURE; FP = FIELD POURED STRUCTURE; TR = TOP OF CONCRETE ROOF; NCM = NO CROWN MATCH FOR PIPES; UD = UNDERDRAIN
- TOP OF CASTING GRADE GIVEN IS THE TOP OF CURB FOR INLET STRUCTURES AND THE FLOWLINE OF THE CLOSED CASTING FOR SASs.
- TOP OF CONCRETE ROOF (TR) IS 1.25 BELOW TOP OF CASTING UNLESS OTHERWISE NOTED.
- ALL REINFORCED CONCRETE PIPES TO BE CLASS III UNLESS OTHERWISE NOTED.
- SURVEYOR TO CONFIRM THAT ALL INLET STATION / OFFSETS LINE UP WITH PROPOSED CURB AND GUTTER.
- ALL REBAR FOR FIELD POUR STRUCTURES SHALL BE EPOXY COATED. ANY EXPOSED STEEL SHALL BE TOUCHED UP OR RECOATED PRIOR TO USE.
- ALL FIELD POURED SAS STORM STRUCTURES SHALL BE CONSTRUCTED IN ACCORDANCE WITH STANDARD DETAIL DRAWING 5.7.3.
- ALL PRECAST SAS STORM STRUCTURES SHALL BE CONSTRUCTED IN ACCORDANCE WITH STANDARD DETAIL DRAWING 5.7.5.
- ALL STRUCTURES CALLED OUT AS FIELD POURED SHALL BE FIELD POURED. ALL OTHER STRUCTURES (NOT INDICATED AS FIELD POURED) SHALL BE SUBMITTED TO CITY ENGINEERING FOR APPROVAL IF PRECAST STRUCTURES ARE PREFERRED. CONTACT ERIC CEFALU OF CITY ENGINEERING AT (608) 243-5894 FOR PRECAST APPROVALS, FAX SHOP DRAWINGS TO (608)264-9275, OR EMAIL SHOP DRAWINGS TO ECEFALU@CITYOFMADISON.COM.

GENERAL ELECTRICAL NOTES:

1. ALL LOCATIONS ARE APPROXIMATE. TRAFFIC ENGINEER SHALL APPROVE FINAL LOCATIONS INCLUDING SETBACK IN THE FIELD. AFTER CONTRACTOR SURVEYS STAKING, THE CONTRACTOR SHALL NOTIFY GRETCHEN AVILES PINEIRO (266-4899), AT LEAST 24-HOURS IN ADVANCE OF NEEDING BASE LOCATION MARKED.
2. THE CONTRACTOR SHALL DO ALL WORK IN ACCORDANCE WITH CITY OF MADISON STANDARD SPECIFICATIONS FOR PUBLIC WORKS CONSTRUCTION 2023 EDITION AND ALL ADDENDUMS THERETO. WWW.CITYOFMADISON.COM/ENGINEERING/DOCUMENTS/STANDARD-SPECIFICATIONS/COMPLETESPECBOOK.PDF
3. ALL CONDUIT SHALL BE PVC SCHEDULE 80 UNDER PAVEMENT OR SCHEDULE 40 OTHERWISE. PULL WIRE REQUIRED AS PER STANDARD SPECIFICATIONS.
4. THE CONTRACTOR SHALL CALL TE SHOP (266-4767) AT THE TRAFFIC ENGINEERING SHOP AT LEAST 24-HOURS IN ADVANCE OF INSTALLING STREETLIGHT UNITS AND BURYING CONDUIT TO ARRANGE FOR INSPECTION.
5. THE CONTRACTOR SHALL CALL TE SHOP (266-4767) PRIOR TO REMOVING OR CONNECTING TO EXISTING CONDUITS OR HANDHOLES. CONTRACTOR SHALL FIELD VERIFY CONDUIT MATERIAL & SIZE.
6. THE CONTRACTOR SHALL ARRANGE FOR PICKUP OF THE FOLLOWING CITY MATERIALS:  
(2) STREET LIGHTING UNITS: 29' CONCRETE POLE, ARM & FIXTURE (GCM2-30H-MV-WW-2R-GY-530-PCR7-WL-SC)



NO.	REVISION	DATE	BY
1			
2			
3			
4			
5			
6			
7			
8			
9			
10			
11			
12			
13			
14			
15			
16			
17			
18			
19			
20			
21			
22			
23			
24			
25			
26			
27			
28			
29			
30			

14763  
MADISON, WI  
CONTRACT NO: 8744

ELECTRICAL PLAN  
ATTICUS WAY ASSESSMENT DISTRICT - 2024  
M:\DESIGN\Projects\14763\CAD\Traffic\14763TE-Electrical.dwg



14763  
E-1

24" Stop Epoxy

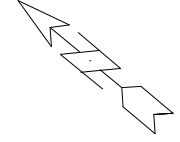
4687 Verona Road

Rolling Way

4685 Atticus Way

6" Crosswalk Epoxy

Red Arrow Trail



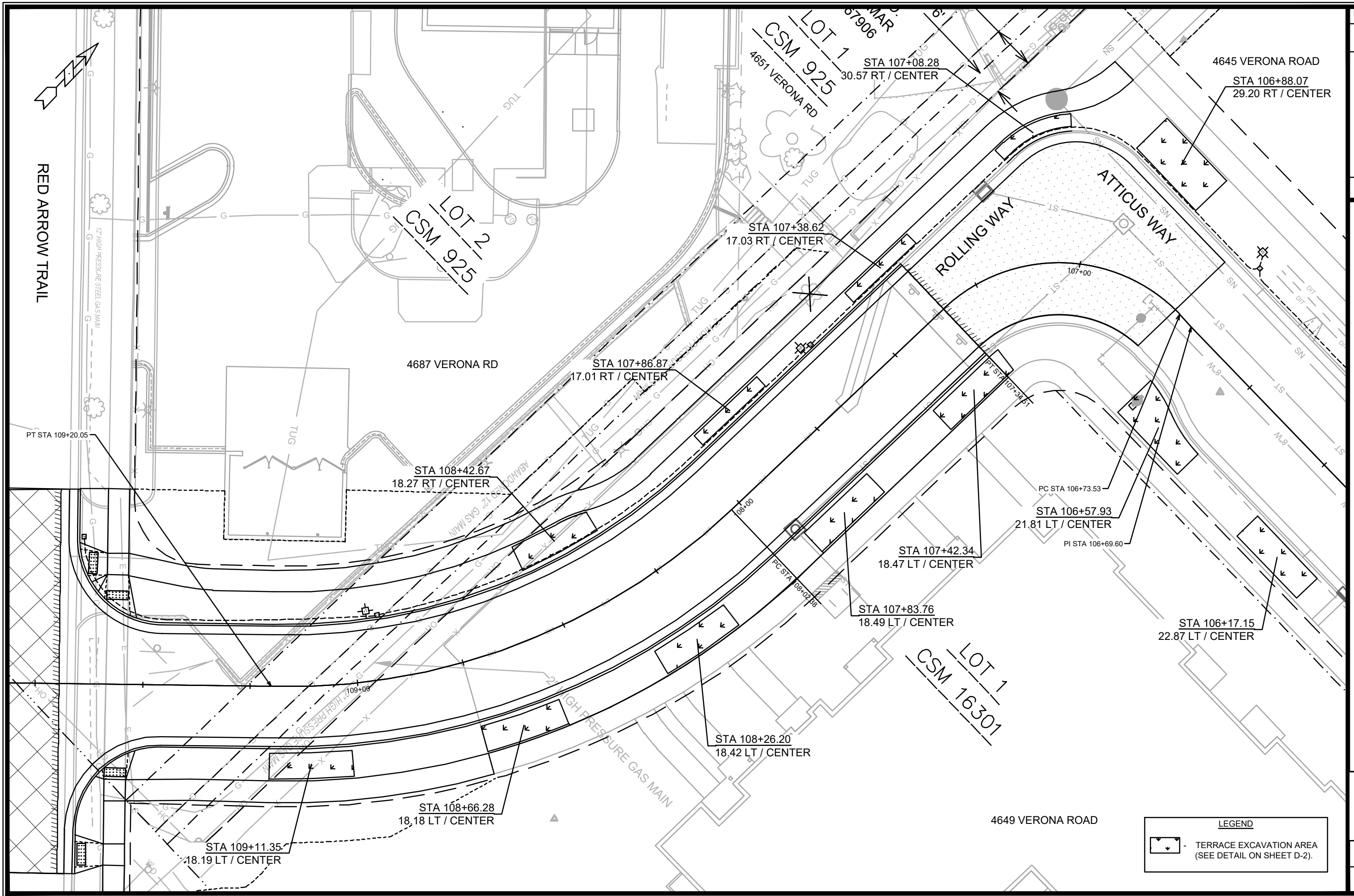
NO.	DATE	BY

14763  
 MADISON, WI  
 CONTRACT NO: 8744

MARKING PLAN  
 ATTICUS WAY ASSESSMENT DISTRICT - 2024  
 M:\DESIGN\Projects\14763\CAD\Traffic\14763TE-PavementMarking.dwg



14763  
 PM-1



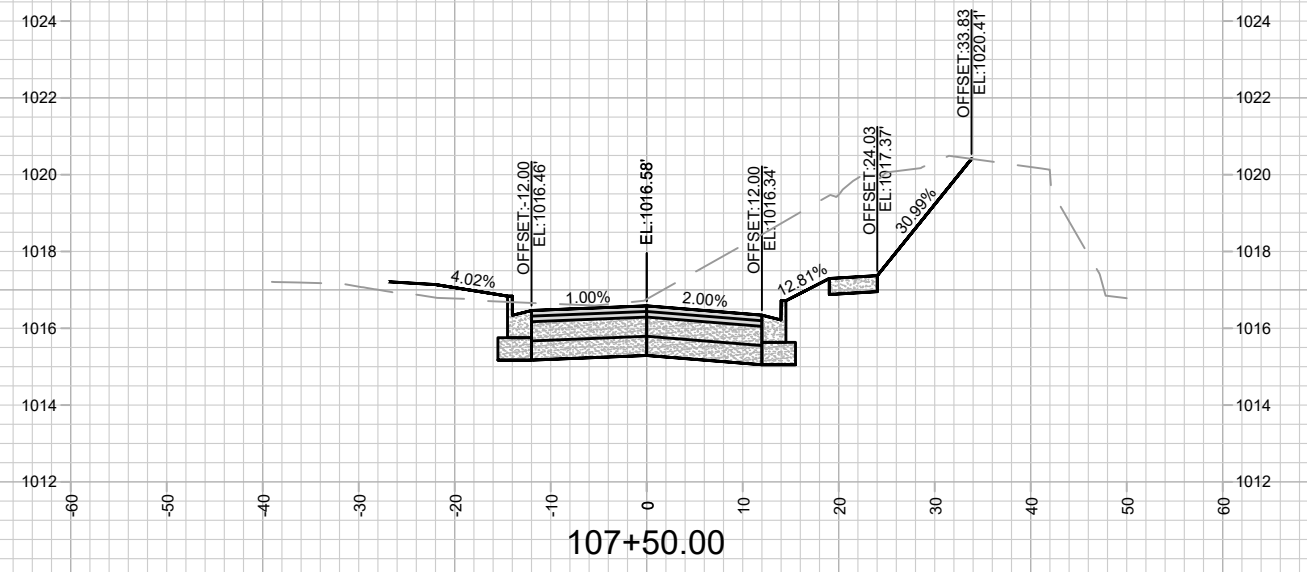
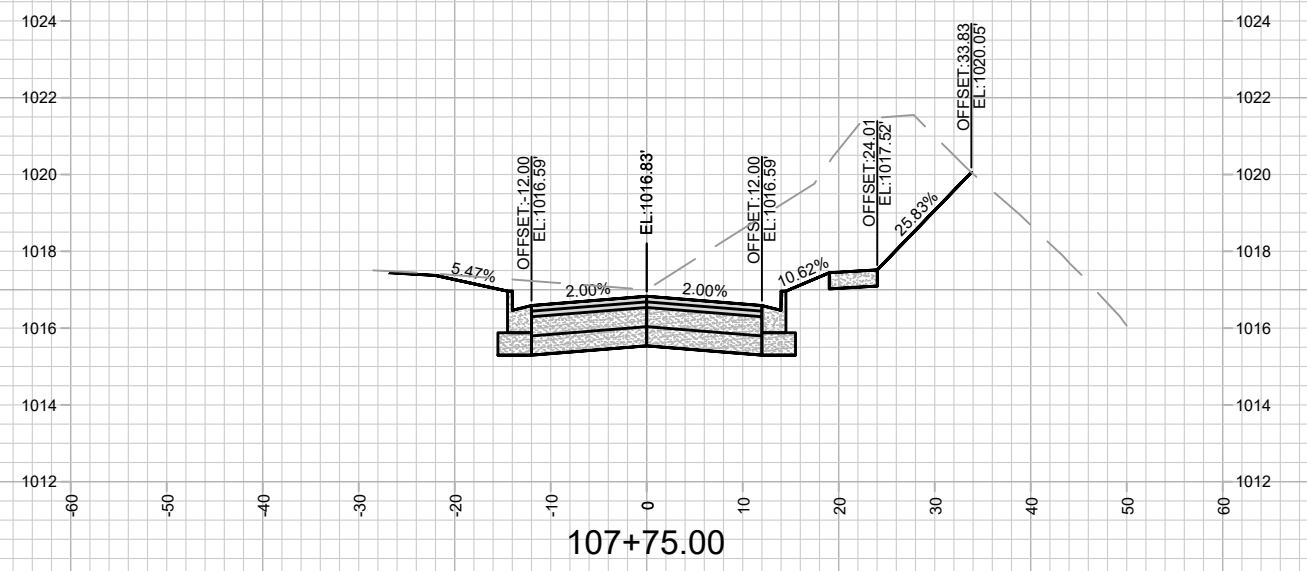
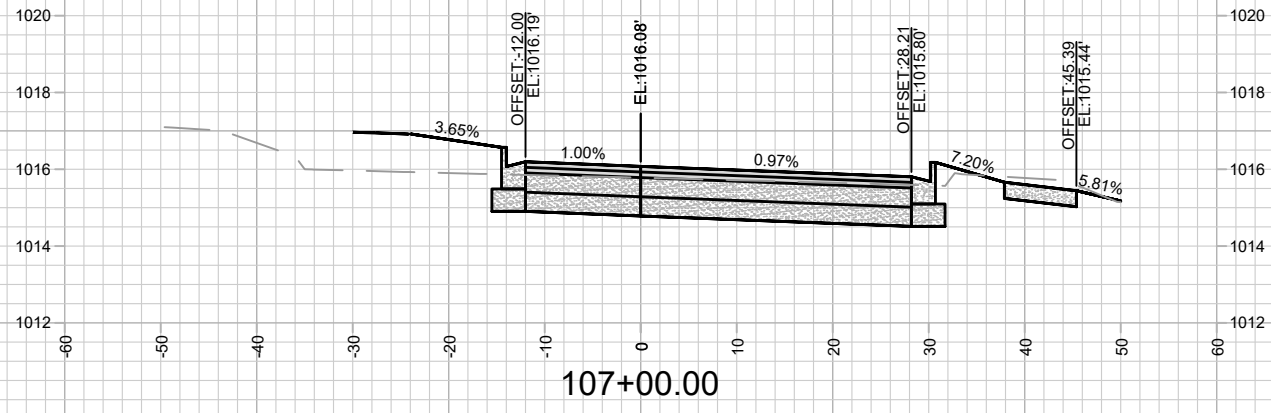
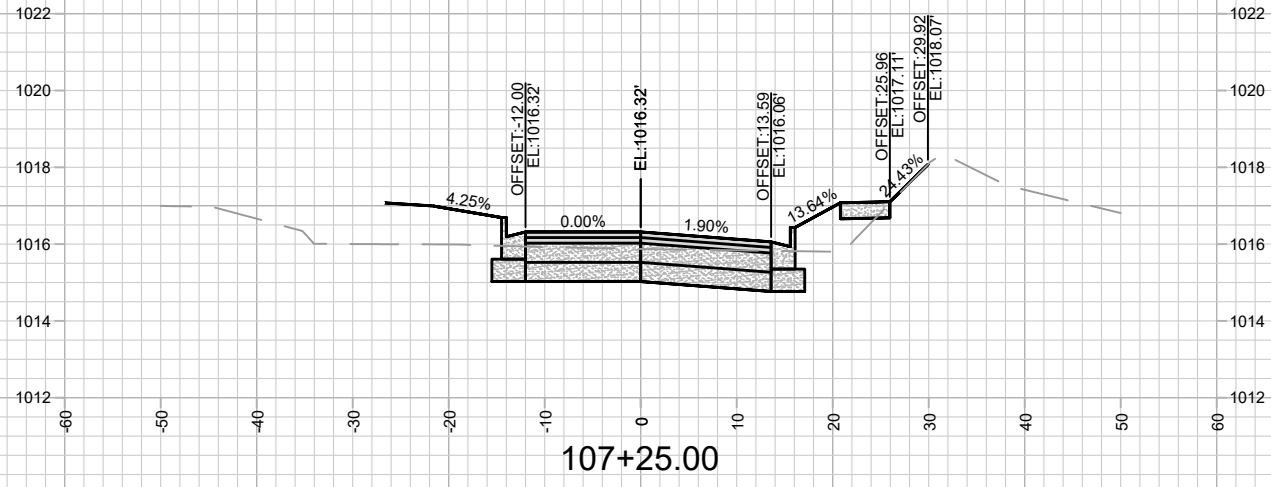
MARK	REVISION	DATE	BY
14763	Design	01/17/2024	3:40 PM
14763	Scale	1:20	L-1

14763  
 MADISON, WI  
 CONTRACT NO: 8744

LANDSCAPING PLAN  
 ATTICUS WAY ASSESSMENT DISTRICT - 2024  
 M:\DESIGN\Projects\14763\CAD\Streets\14763EN-Street.network\_Overview.dwg



14763  
 L-1



MARK	REVISION	DATE	BY

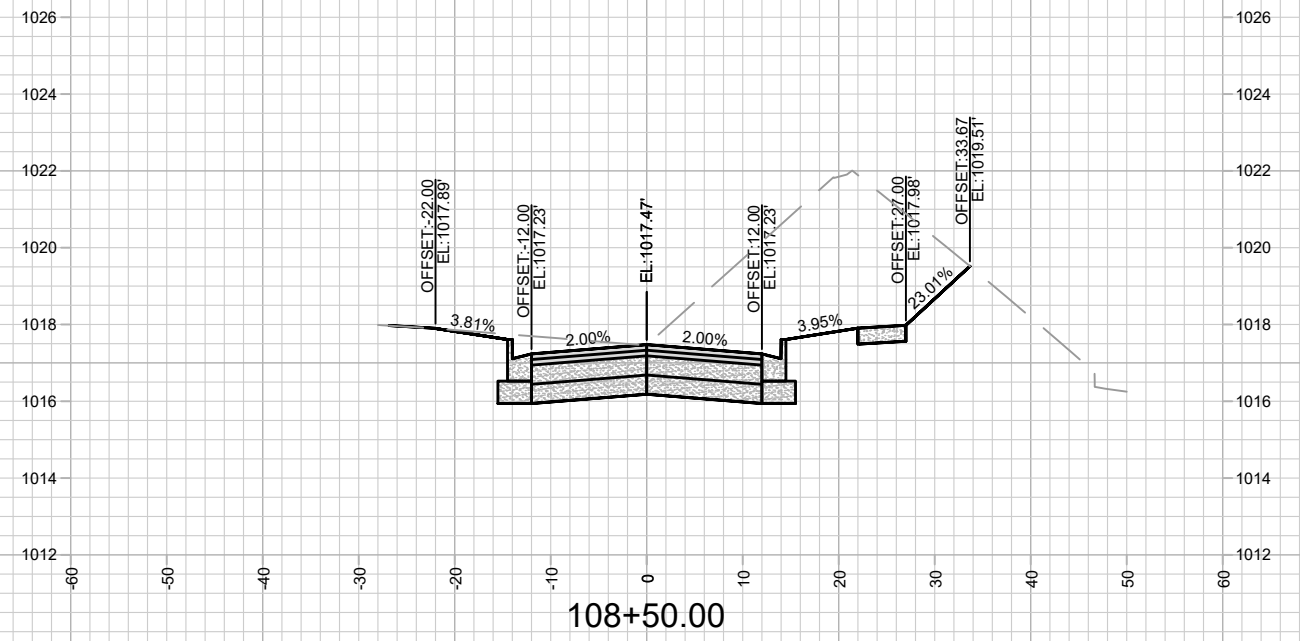
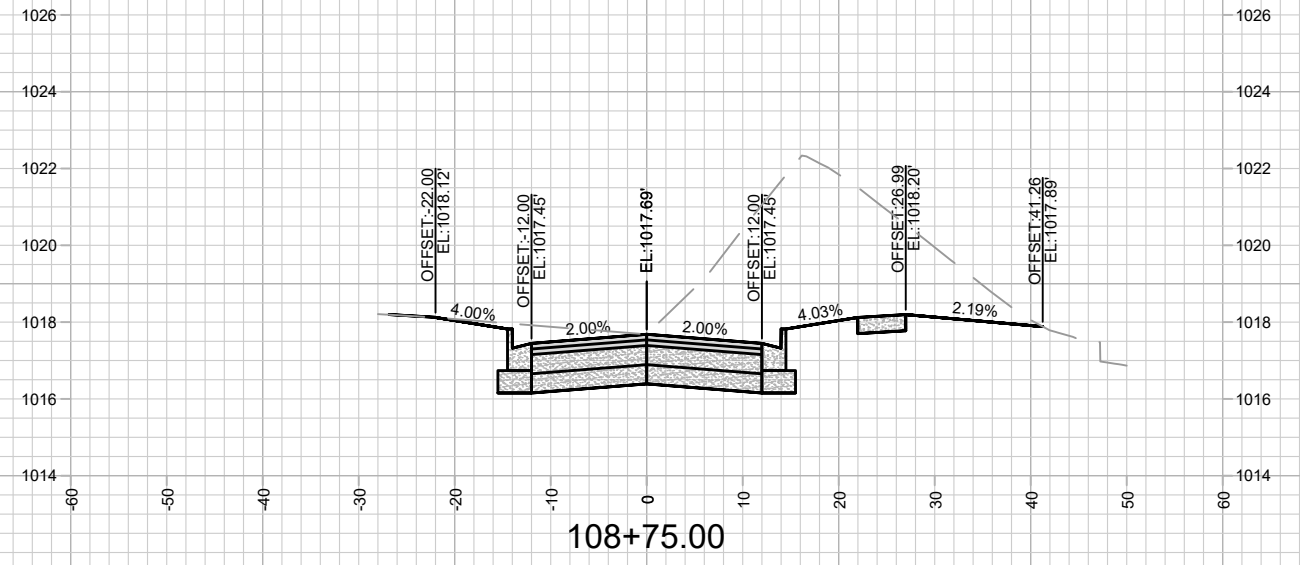
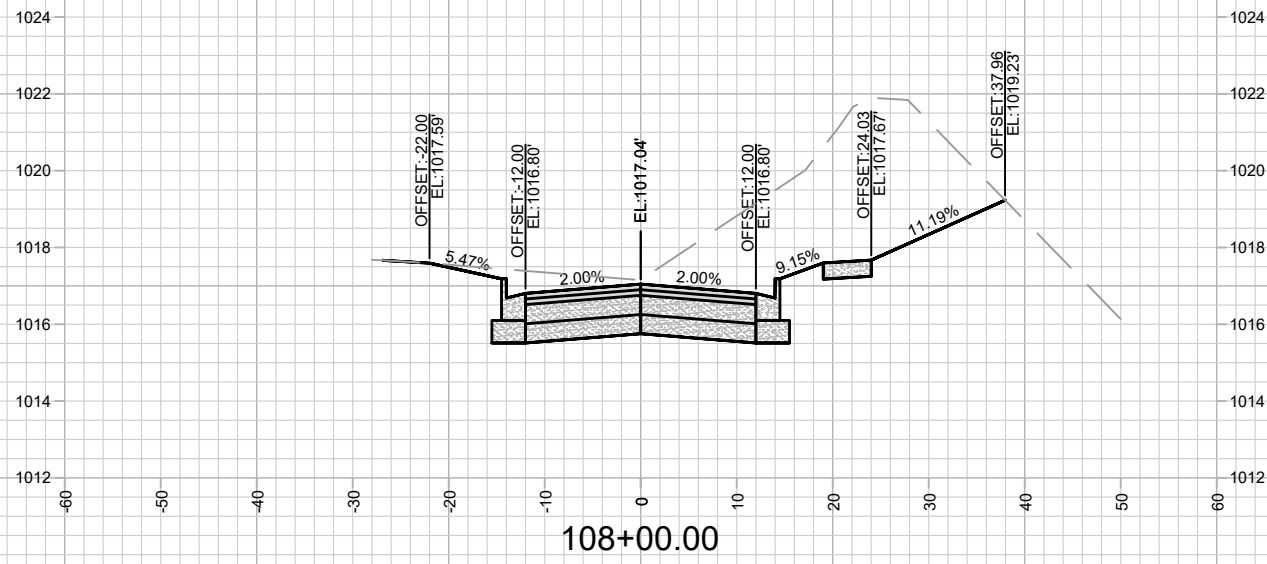
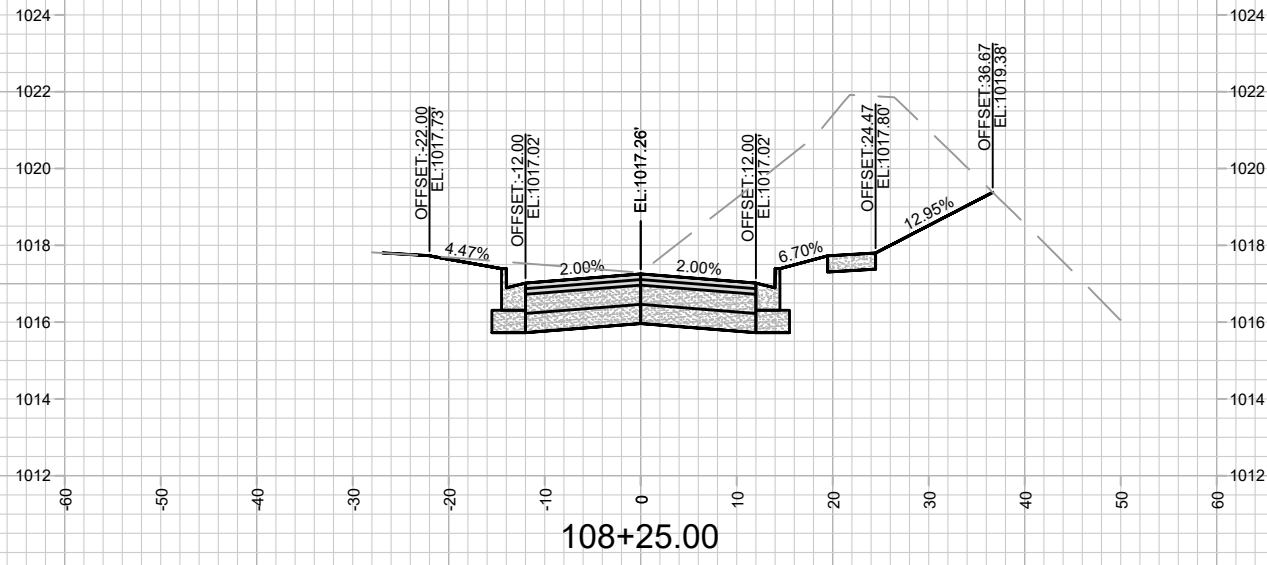
14763  
 MADISON, WI  
 8744  
 CONTRACT NO:

CROSS SECTIONS - ROLLING WAY  
 ATTICUS WAY ASSESSMENT DISTRICT - 2024  
 M:\DESIGN\Projects\14763\CAD\Streets\14763EN-Corridor.dwg



14763  
 X-1

Designed By: ##  
 Date: 6/11/2024 11:35 AM  
 Scale: 1" = 20'  
 X-1



MARK	REVISION	DATE	BY

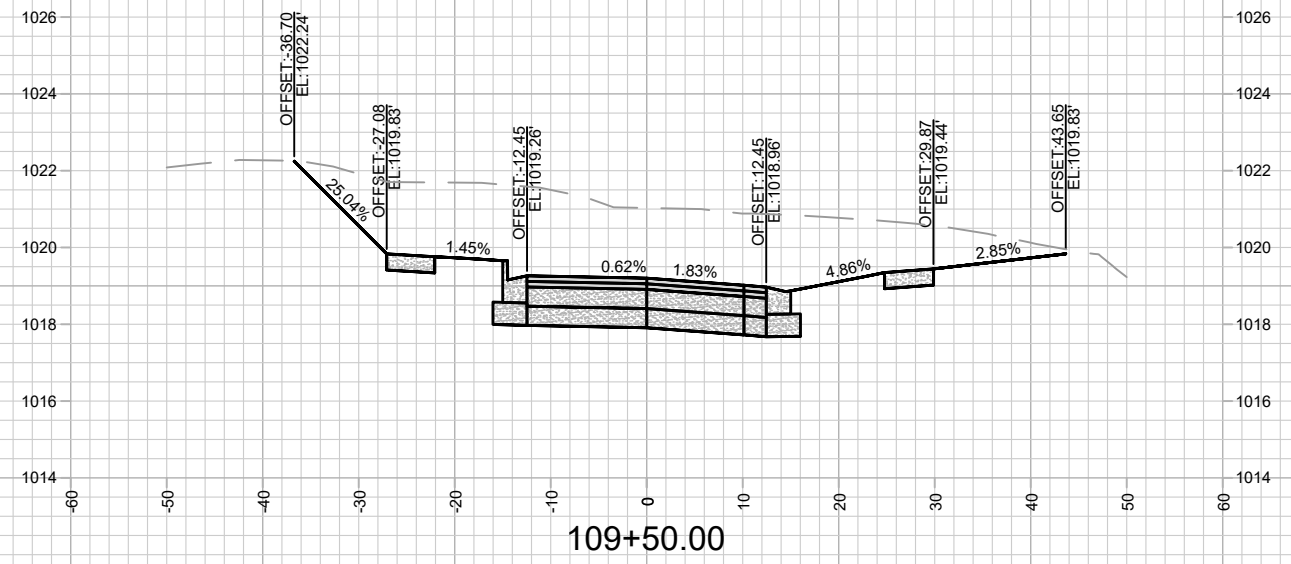
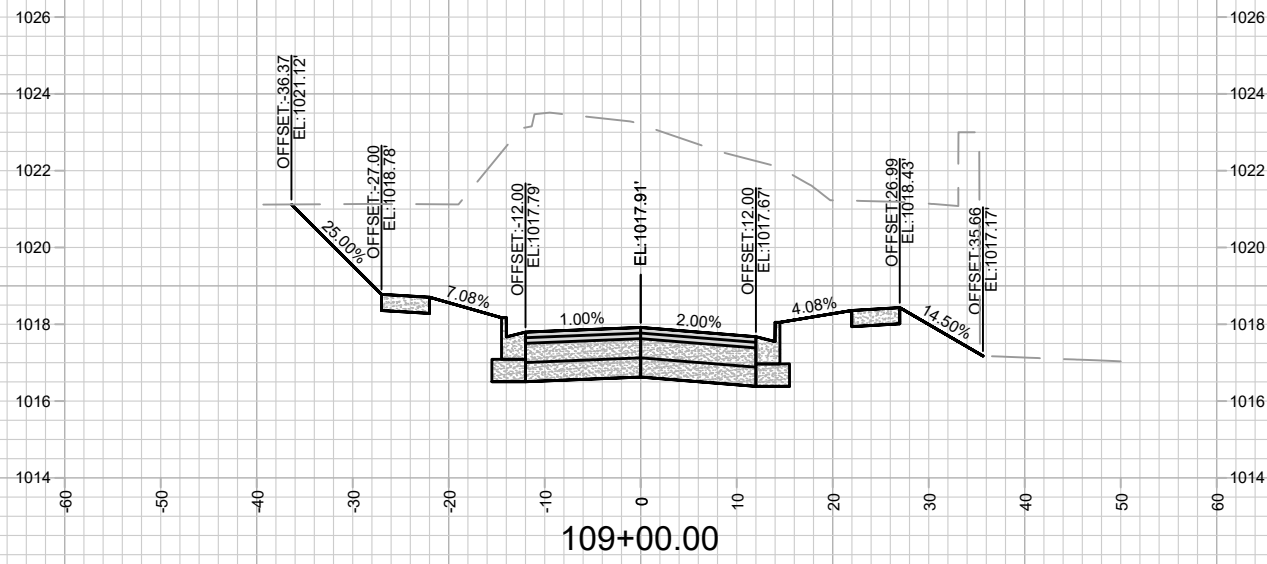
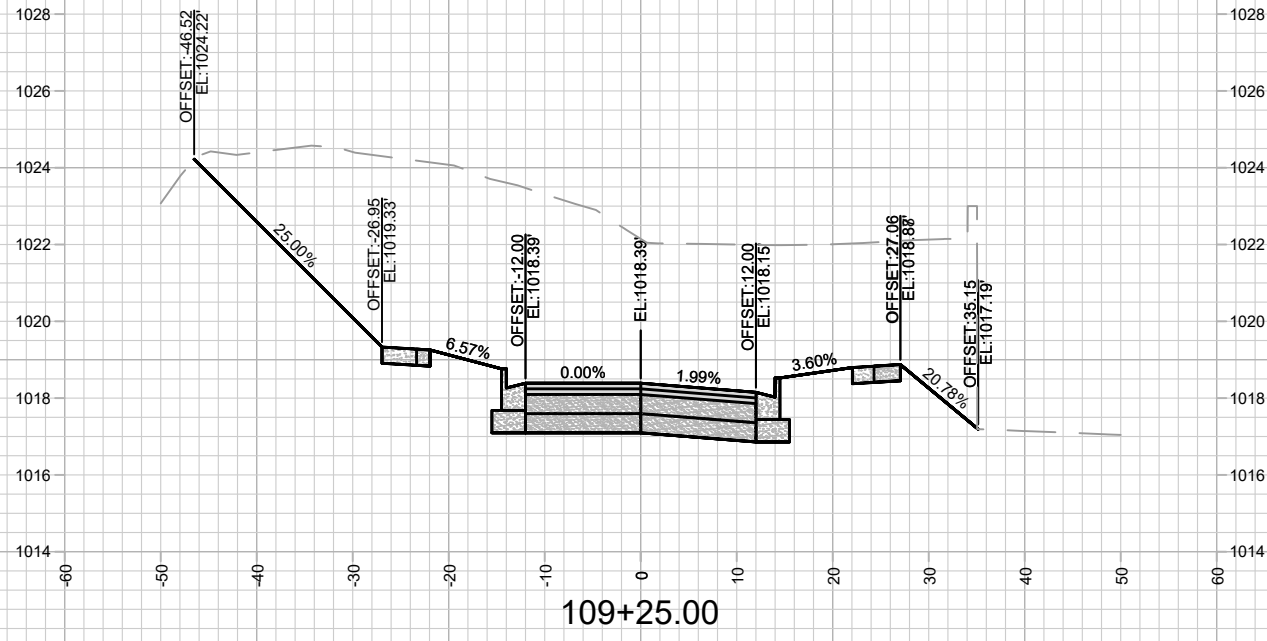
Designed By: ##  
Date: 6/11/2024 11:37 AM  
Scale: 1" = 20'  
14763  
X-2

14763  
MADISON, WI  
8744  
CONTRACT NO:

CROSS SECTIONS - ROLLING WAY  
ATTICUS WAY ASSESSMENT DISTRICT - 2024  
M:\DESIGN\Projects\14763\CAD\Streets\14763EN-Corridor.dwg



14763  
X-2



MARK	REVISION	DATE	BY

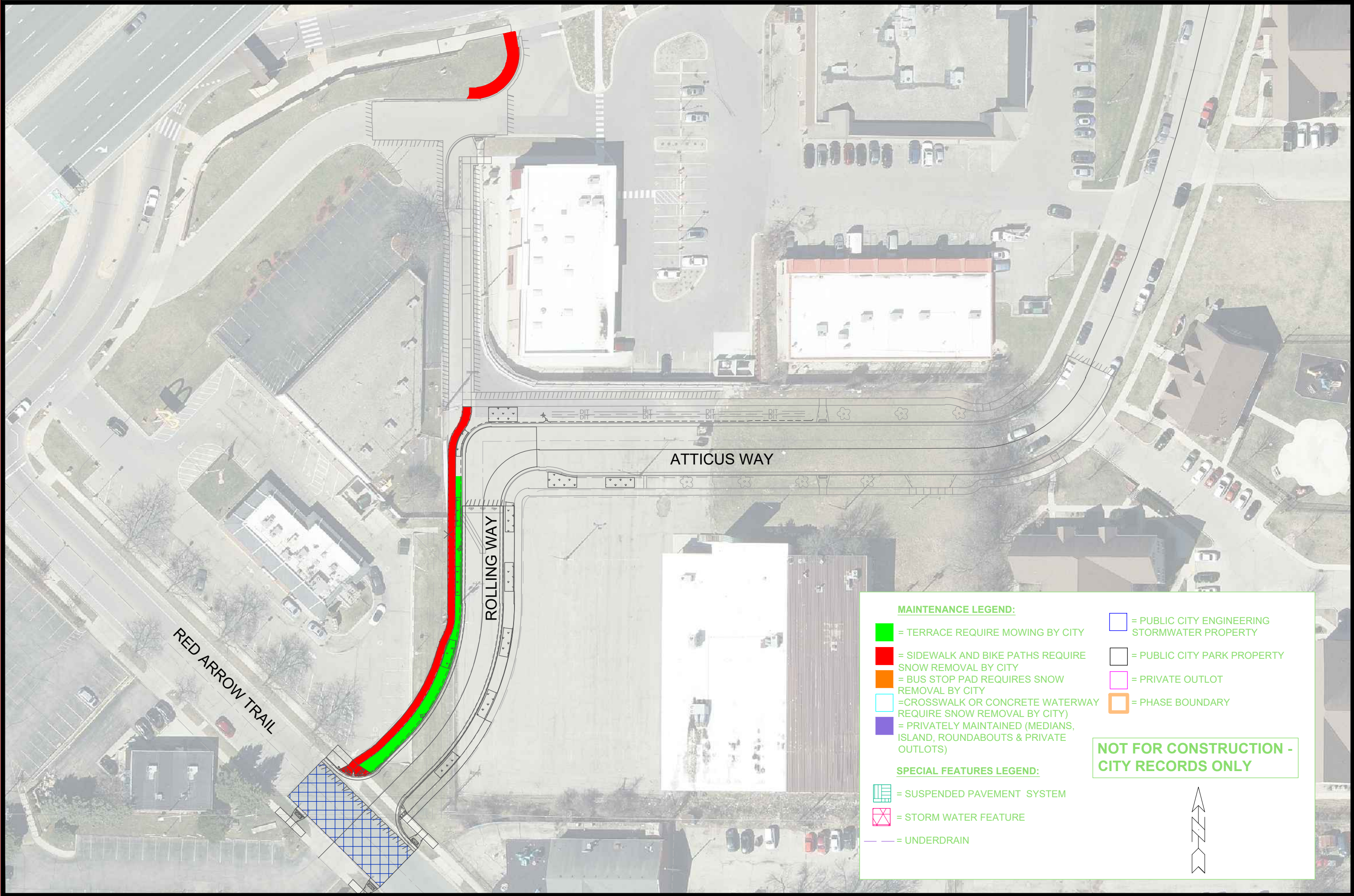
14763  
 MADISON, WI  
 CONTRACT NO: 8744

CROSS SECTIONS - ROLLING WAY  
 ATTICUS WAY ASSESSMENT DISTRICT - 2024  
 M:\DESIGN\Projects\14763\CAD\Streets\14763EN-Corridor.dwg



14763  
 X-3





**MAINTENANCE LEGEND:**

- = TERRACE REQUIRE MOWING BY CITY
- = SIDEWALK AND BIKE PATHS REQUIRE SNOW REMOVAL BY CITY
- = BUS STOP PAD REQUIRES SNOW REMOVAL BY CITY
- = CROSSWALK OR CONCRETE WATERWAY REQUIRE SNOW REMOVAL BY CITY
- = PRIVATELY MAINTAINED (MEDIANS, ISLAND, ROUNDABOUTS & PRIVATE OUTLOTS)
- = PUBLIC CITY ENGINEERING STORMWATER PROPERTY
- = PUBLIC CITY PARK PROPERTY
- = PRIVATE OUTLOT
- = PHASE BOUNDARY

**SPECIAL FEATURES LEGEND:**

- ||||| = SUSPENDED PAVEMENT SYSTEM
- X = STORM WATER FEATURE
- = UNDERDRAIN

**NOT FOR CONSTRUCTION - CITY RECORDS ONLY**